



PROFESSIONAL · INTEGRITY · RESPONSIBLE



TORCH-ON SYSTEM MINERAL MEMBRANE

**5/10 YEARS
WARRANTY**

Torch-On System

MINERAL MEMBRANE

Highly-Reliable Waterproofing

The **Most Affective** Waterproofing Solution



**5/10 YEARS
WARRANTY**



**4mm
THICKNESS**



**INSTALL
PROFESSIONAL
WORKER**



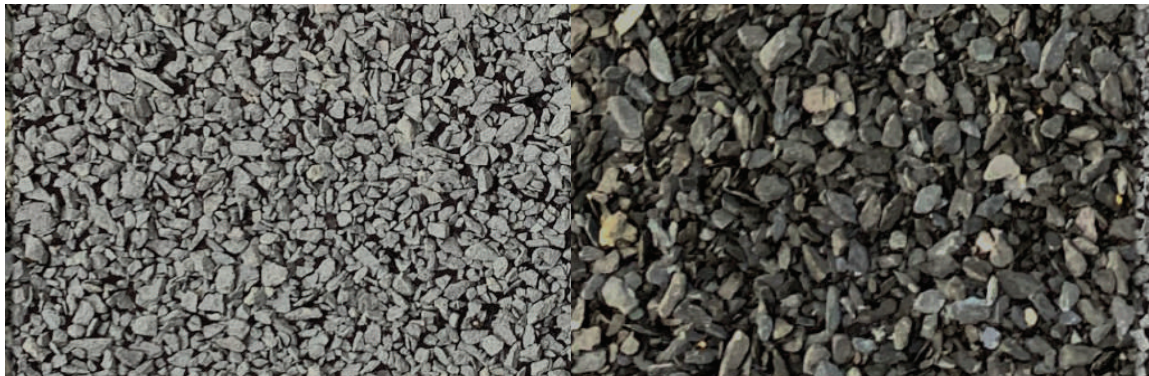
**HIGHLY
DURABLE**



**WEATHER
RESISTANT**

The Color Choice is Yours!

5 /10 YEARS WARRANTY



SLATE GREY

DARK GREY



BEFORE



APPLY BITUMEN



AFTER

WORK PROGRESS

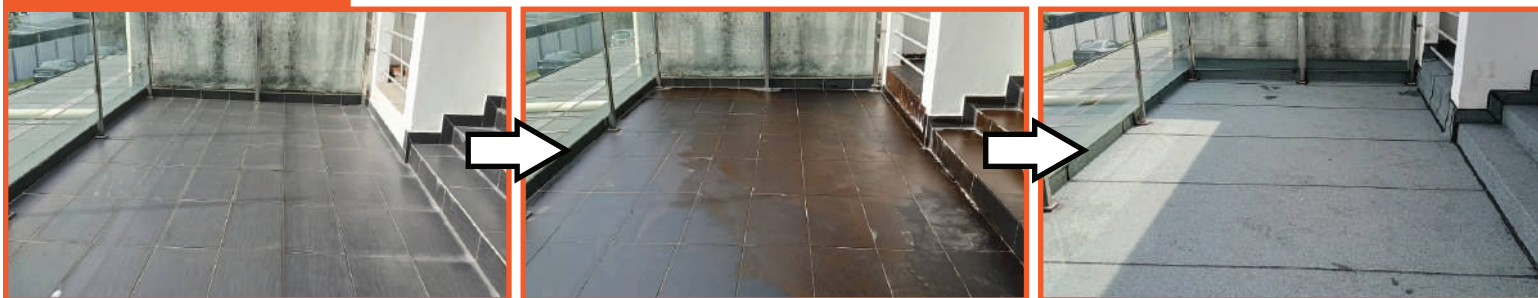
ROOFTOP



CAR PORCH



BALCONY



WATER TANK



WORK REFERENCES

KUALA LUMPUR / SELANGOR

- BUKIT BINTANG
- GOMBAK
- AMPANG
- SETIAWANGSA
- WANGSA MAJU
- CHERAS
- SUNGAI BULOH
- KLCC
- SETAPAK
- KEPONG
- PETALING JAYA
- KAJANG
- KLANG
- SUBANG JAYA
- SHAH ALAM
- PUCHONG
- RAWANG
- BANGSAR
- SENTUL
- SEPANG

NEGERI SEMBILAN

- SEREMBAN
- BAHAU
- PERAK
- IPOH
- TANJUNG MALIM

PAHANG

- KUANTAN
- CAMERON HIGHLANDS

MELAKA

- ALOR GAJAH
- AYER KEROH
- BUKIT KATIL

JOHOR

- JOHOR BAHRU
- SKUDAI
- BATU PAHAT

Step of Installations

1 SURFACE PREPARATIONS

Before apply Torch-On Membrane, clean entire floor surface to remove dirt around the exposed areas



After cleaning, a closer look at the cracks can also help the installation better

2 TOUCH UP REPAIR

To supply and apply cement and sand to filled up those existing exposed holes



Also angle fillets at edges and upturn accordingly

Step of Installations

3 BITUMEN PRIMER

Lay bitumen based primer before laying the membrane



Last but no least before applying the membrane on the surface

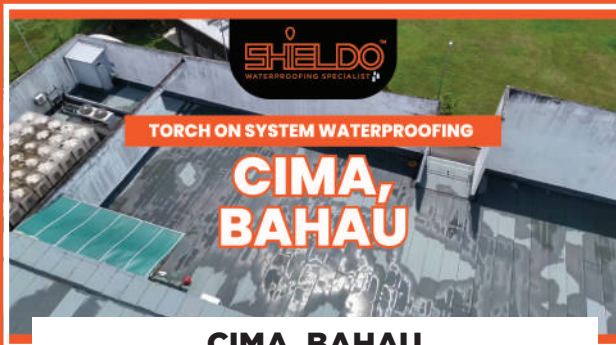


4 APPLY THE MEMBRANE

Apply the membrane using the torch-on method



JOB REFERENCES



CIMA, BAHAU



KWASA LAND, SUNGAI BULOH



VIVA RESIDENCY, KUALA LUMPUR



SKY GARDEN, JOHOR BAHRU



MIF TOWER, SHAH ALAM



LUTHERAN CHURCH, CHERAS



LAMAN SITI KHADIJAH, NILAI



ZEFER HILL, PUCHONG

5/10 YEARS WARRANTY